



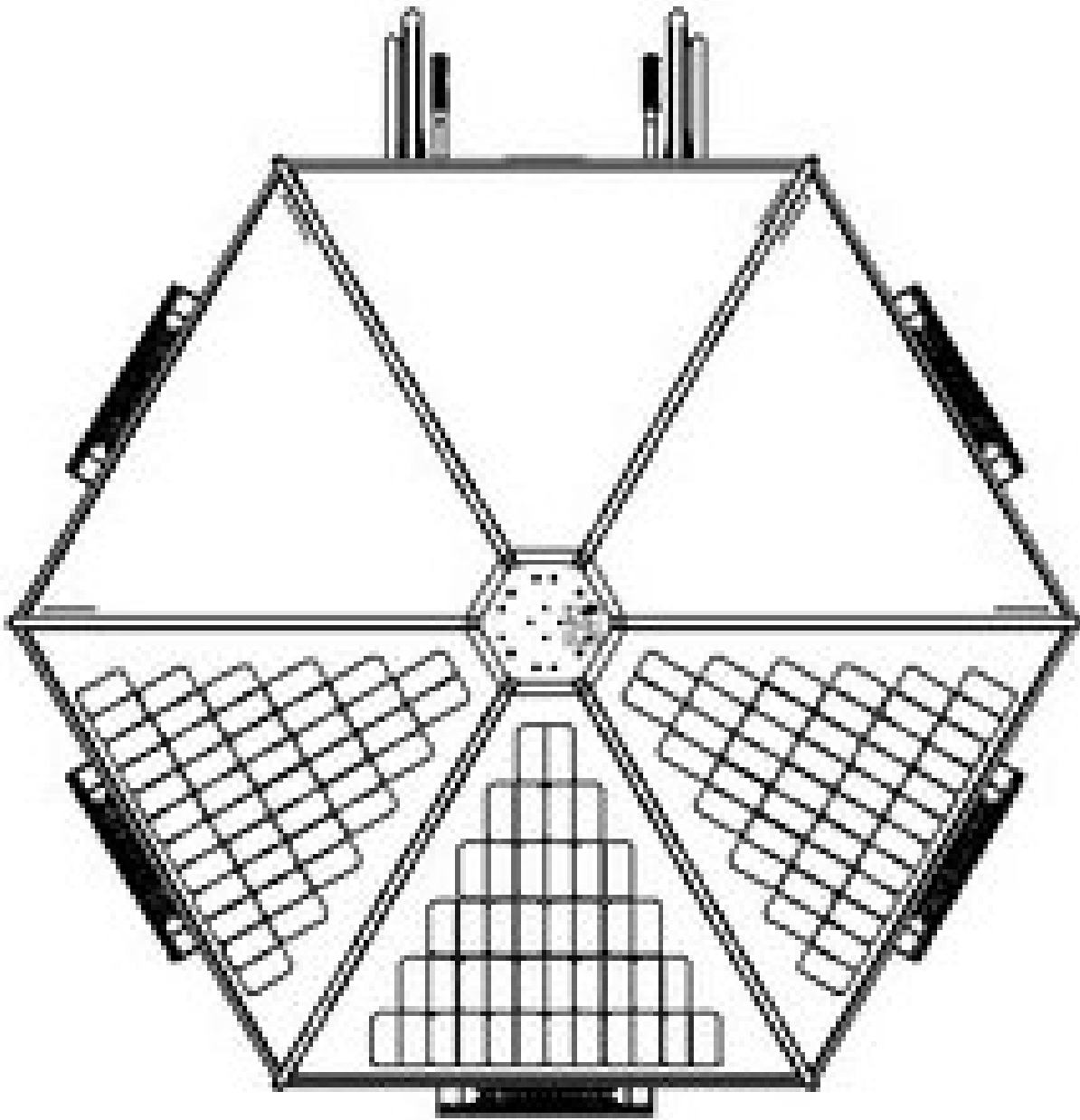
~Solar Canopy~

Assembly Instructions

Step 1:

Remove Walls and Top from
crate



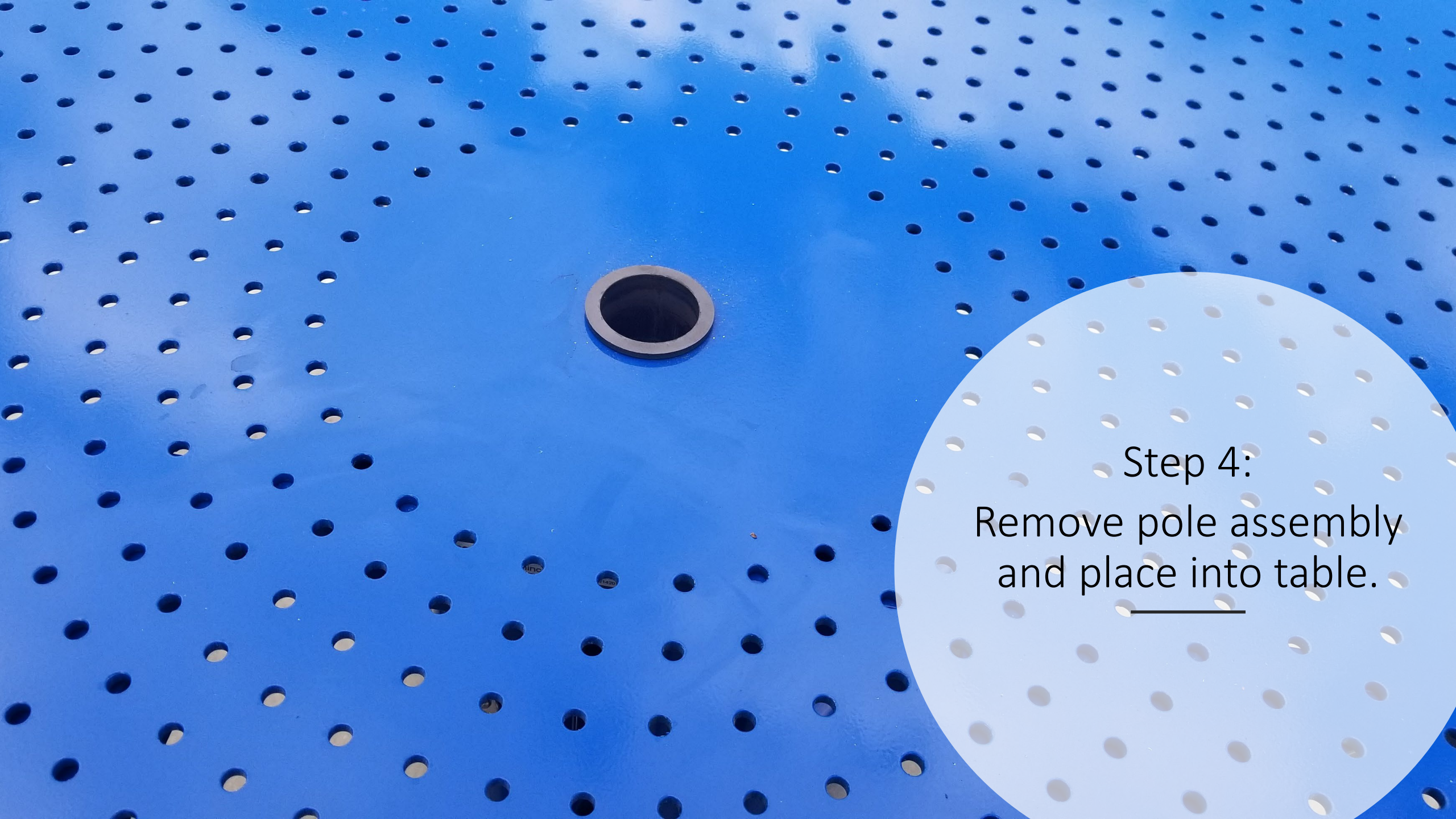


Step 2:


Remove Umbrella canopy and set on ground with solar panels facing up.



Step 3:
Attach top cover with the four $\frac{1}{4}$ -20 x .5" button head bolts.

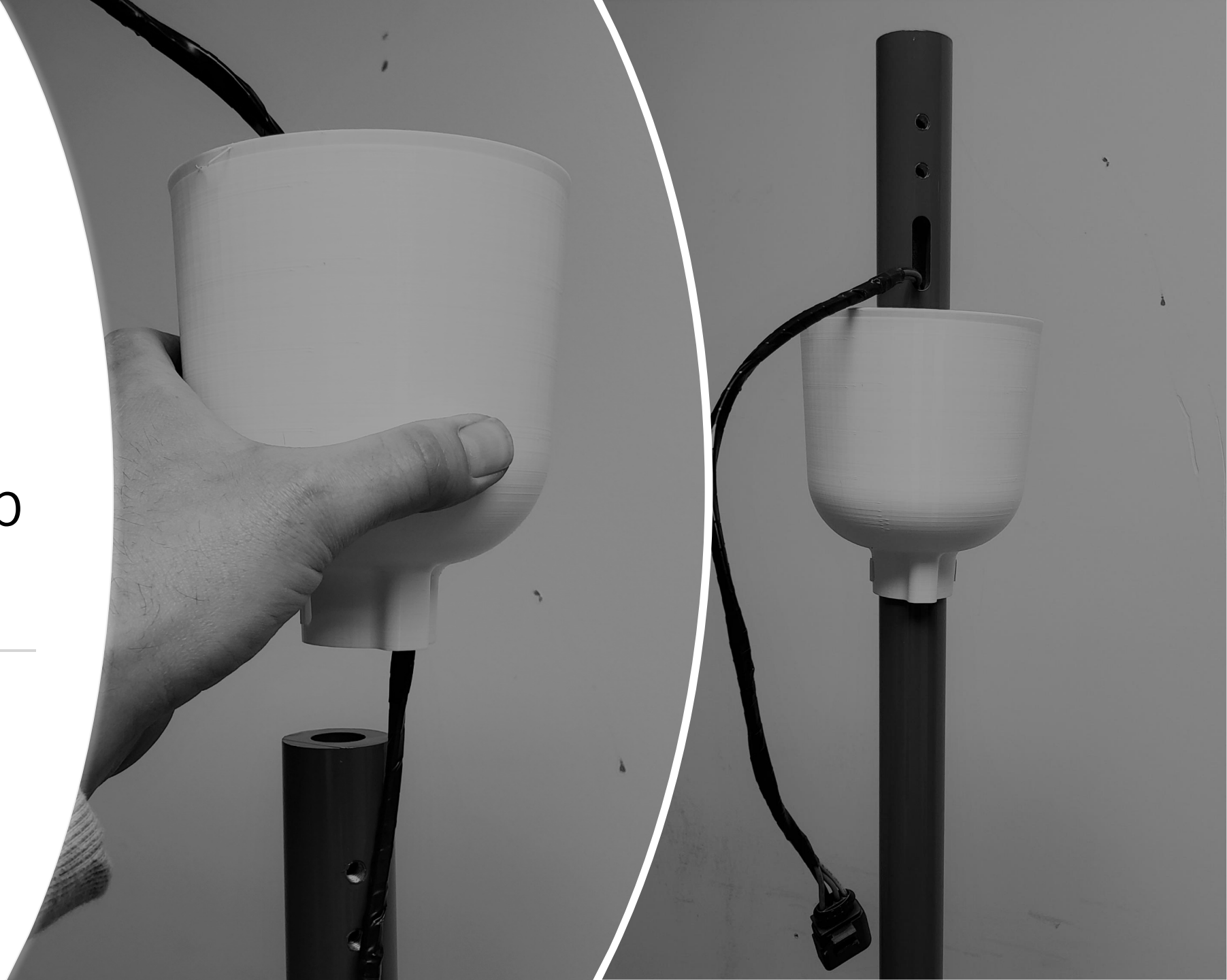


Step 4:
Remove pole assembly
and place into table.



Step 5:
Slide plastic cup
onto pole.

Do not bolt at this point!!!





Step 6:
Ensure that the pole is sturdy and
aligned.

Step 7:
Place Canopy onto Pole
and Align holes to insert
5/16-18 Hex head bolts.




Step 8:
Tighten bolts into pole.

Step 9:
Rotate Umbrella,
Center Solar
Panel should be
Due South

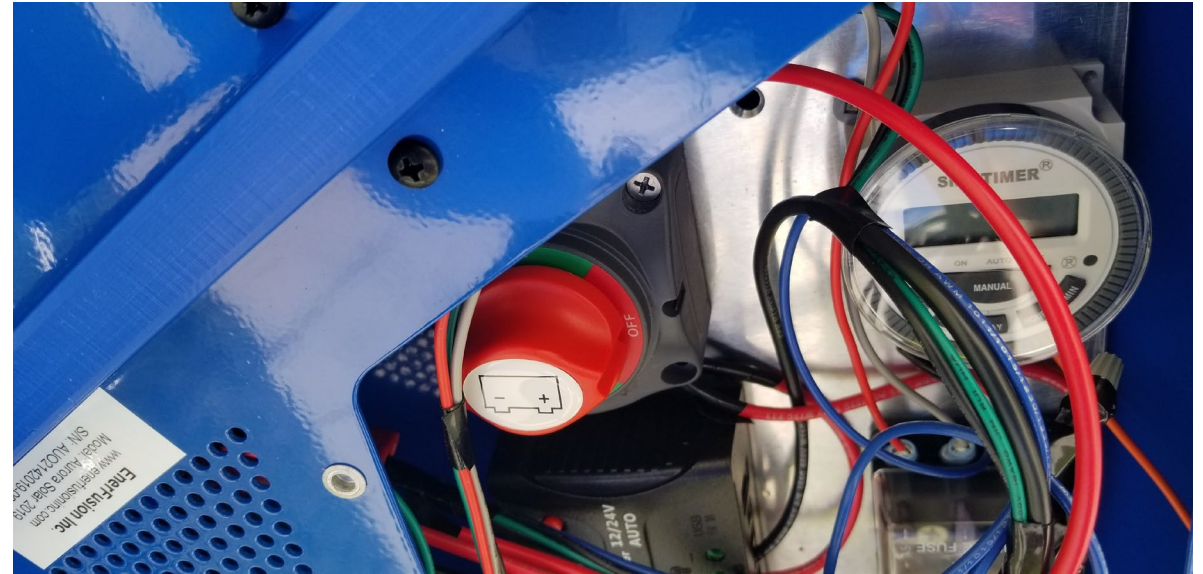




Step 10:
Fasten Pole into
Base, using 5/16-
18 bolts.



Step 11:
Anchor Base to the Concrete

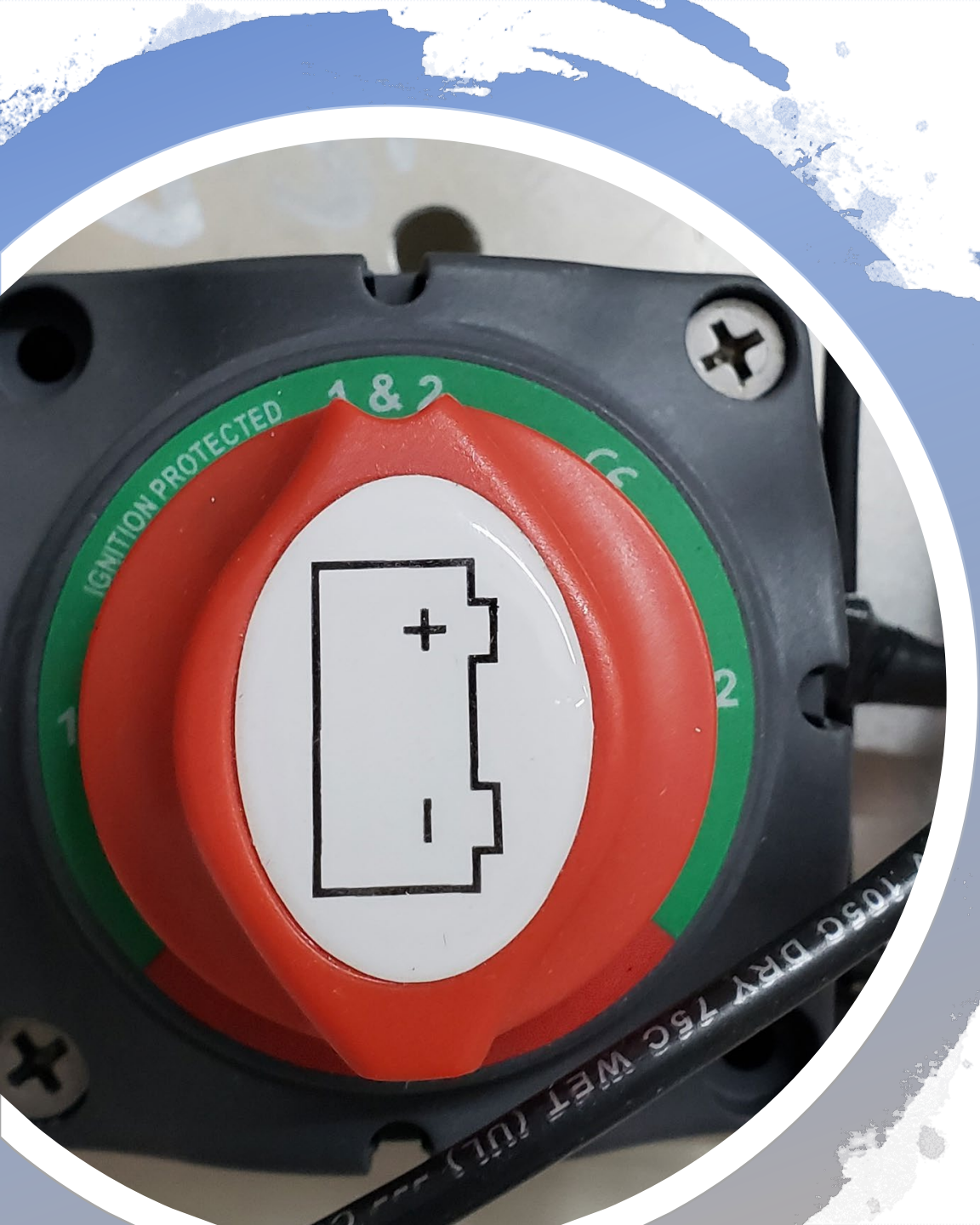


Step 12:
Open Access panel.

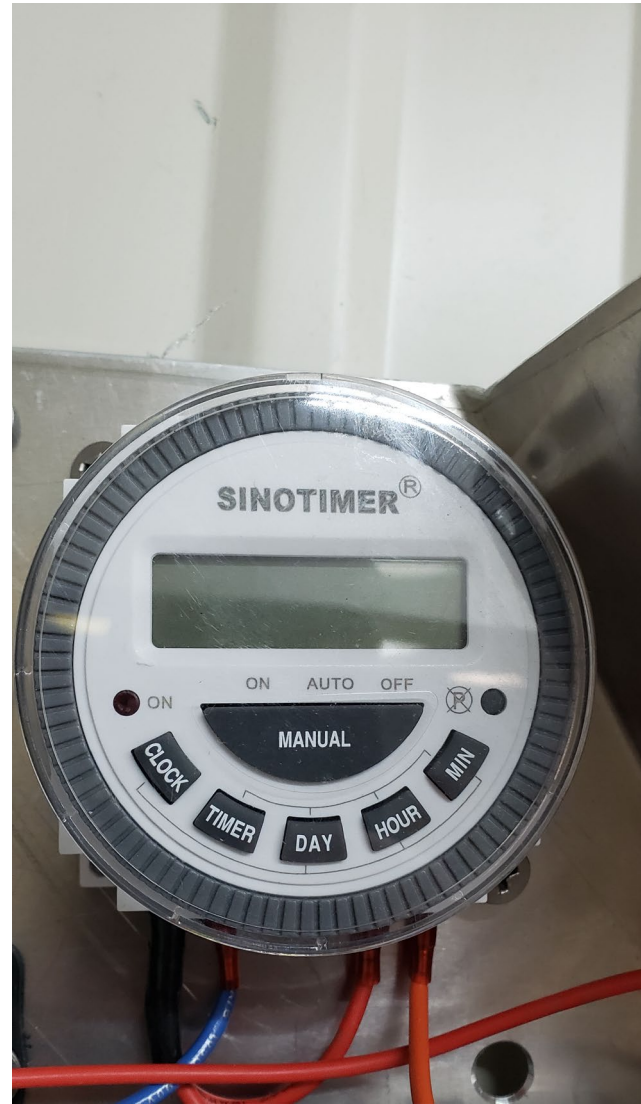
Step: 13

Connect Pole
Wire to
Umbrella





Step 14:
Turn Battery switch to 1&2
position.



Step 15:
Set Clock on digital
Timer. Set Timer for
Lights to go On and Off.
Turn Timer to Auto.



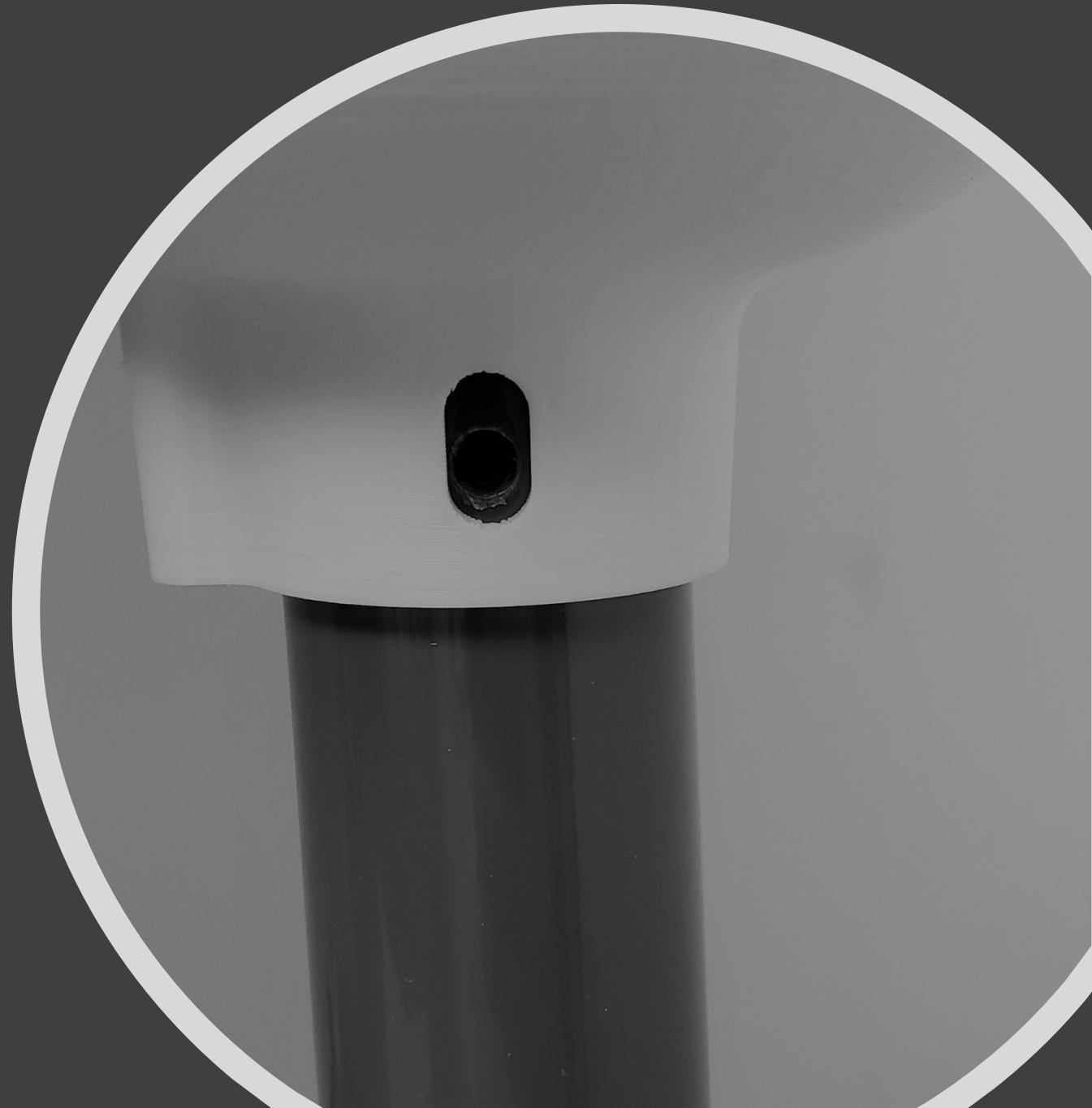
Step 16:
Check USB and
Qi for proper
operation.

Step 17:

If all functions are working properly secure
access panel back on.

If not, inquire about trouble shooting procedures

Step 18:
Place Plastic cup over
Wires and fasten in Place
with $\frac{1}{4}$ -20 Button Head.





Aurora Assembly is Complete